

DP
180

OVERHEAD SLIDING DOOR SYSTEM

Primeview



excellent thermal insulation properties

DP 180 PRIMEVIEW – SYSTEM FEATURES

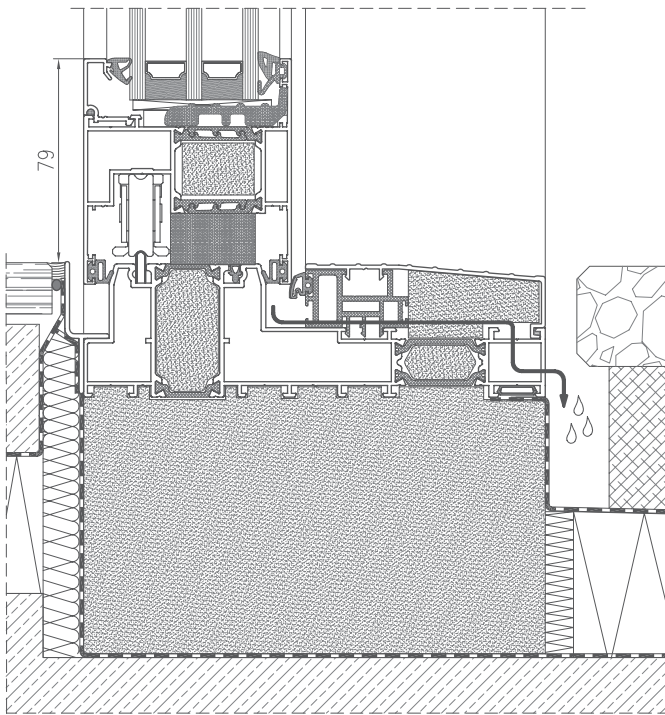
- possibility of making the structure with a narrow mullion in RC2 class,
- possibility of manufacturing doors of very large dimensions,
- possibility of manufacturing all-glass corner at an angle of 90° and a movable mullion,
- possibility of manufacturing doors with integrated threshold – no architectural barriers,
- divided thermal separators increasing resistance to thermal deformation of the leaf,
- possibility of installing automatic doors opening/closing system,
- micro ventilation in the standard variant,
- possibility of infill assembly from the outside,
- possibility of joining of glass panes without sash bars,
- linear drainage solution,
- possibility of using pleated mosquito nets in the monorail frame.



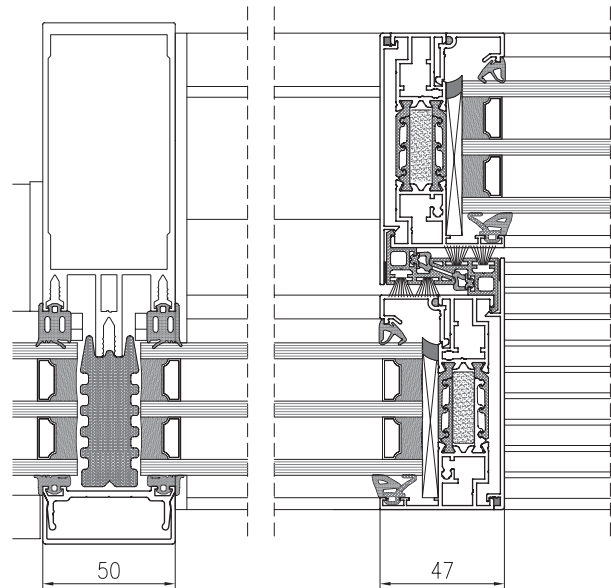
See the product
on the website

Picture: Private house
Aluminium manufacturer: Zimny Sp. z o.o., Łódź

CROSS SECTION THROUGH
DP 180 PRIMEVIEW DOOR, SLIM VERSION



CROSS SECTION THROUGH DP 180
PRIMEVIEW WITH FACADE



TECHNICAL PARAMETERS - DP 180 PRIMEVIEW

		STANDARD	SLIM
ENERGY	Thermal insulation EN 10077-2	Uw from 0,7 W/m ² K	Uw from 0,7 W/m ² K
	Acoustic insulation EN ISO 140-3	Rw = 47 dB	-
COMFORT	Air permeability EN 12207	Class 4	Class 4
	Water tightness EN 12208	E1350	Class 9A
	Wind load resistance EN 12210	Class C3	Class C4
SAFETY	Anti-theft protection EN 1627	RC2	-

TECHNICAL PARAMETERS - DP 180 PRIMEVIEW

	STANDARD	SLIM
Frame structural depth	180 mm with the extension possibility	180 mm with the extension possibility
Leaf structural depth	81 mm	81 mm
Infill thickness	29 ÷ 63 mm	29 ÷ 63 mm
Maximum dimensions L x H	leaf 3300 x 3300 mm	leaf 3230 x 2900 mm
Maximum weight of manual leaf	440 kg	440 kg
Maximum weight of automatic leaf	600 kg	600 kg
Maximum weight of fixed part	1200 kg	1200 kg
Structure type / leaves diagrams	Diagrams: A, C, D, F, G, K, Galendage, 90° corners	Diagrams: A,C, D, G, K